



MARIL LINSEED OIL EMULSION WALL PAINT

- Based on pure, natural, water-emulsified oils for a healthy indoor climate
- Unique, water-based, matte, moisture-permeable wall paint for indoor use
- Breathable and does not build up a static charge
- Available in modern and historical colours



ALTIJGO

- Lime putty for application on old lime layers
- Cannot be recoated with regular wall paints
- Highly suitable for moist areas like (wine)cellars, basements and bathrooms
- Available in white



SUPERCAT

- Outdoor-quality wall paint
- Extra durable and class-1 scrub resistant
- Easy to apply
- Excellent opacity
- Available in virtually any colour



RECYCLED WALL PAINT #8550

- Made out of 97% upcycled paint residue
- Ideal application
- Good opacity
- Suitable for roller and spray application
- RAL 9010

UNIVERSALLY APPLICABLE FOR INDOOR USE

AUTHENTIC LIMEWASH SINCE 1938

SCRUB-RESISTANT LATEX INDOOR OUTDOOR

RECYCLED LATEX FOR INDOOR USE



RIGO Verffabriek (Paint factory) since 1938

RIGO Verffabriek is a Dutch family company making paint, oil and lacquer products since 1938. From the very beginning, we do this in the city of IJmuiden, a vigorous seaport town with beaches, ships, dunes and industry, and a no-nonsense character.

Our goal is to manufacture our products in the most honest and progressive way. That's why we use renewable raw materials wherever possible, making innovative products. We value good cooperation with our customers. An example of this is providing paint-related advice on site. Together, we look for a technically feasible solution, taking into consideration the correct treatment of the substrate in question, colour history and the various sustainability requirements of the client. Thanks to our extensive product assortment, we will always find a fitting solution.

For us, making paint is also real human work. That's something we're proud of. That is why we can say: RIGO Verffabriek is a platform created for and by craftsmen. Together, we make the most beautiful products. Together, we make Masterpieces.



DOKWEG 40 1976 CA IJMUIDEN THE NETHERLANDS +31 (0) 255 54 84 48
INFO@RIGOVERFFABRIEK.NL RIGOVERFFABRIEK.NL



Ryan, Craftsman Paint Production

FOR CURRENT AND FUTURE HERITAGE



DOKWEG 40 1976 CA IJMUIDEN THE NETHERLANDS +31 (0) 255 54 84 48
INFO@RIGOVERFFABRIEK.NL RIGOVERFFABRIEK.NL

We make wall paints with exceptional properties. They vary from authentic limewash to antistatic linseed oil wall paint and recycled wall paint. With SKYN WALL PAINT, you can provide walls, ceilings and façades with an exceptionally well-fitting second skin that contributes to a pleasant environment.

Our mineral silicate paints are highly suitable for the renovation of current and future heritage. These paints are produced by our fellow paint producer Beek in Germany. They have been making silicate paints based on water glass since 1894.

SKYN MINERAL SILICATE PAINT



FOR CURRENT
AND FUTURE HERITAGE



THE SECRET OF SILICATE PAINT

Silicate paints (or mineral paints) are based on potassium silicate (water glass); an inorganic material that causes silicification with a mineral substrate. This results in a highly moisture-permeable system, with a high yield and a sustainable result. Silicate paint colours are hand mixed. Thanks to the use of inorganic pigments, these paints are colourfast and the colours remain deep. Silicate paints are a wonderful addition to interiors and an excellent façade finish for outdoor use.

The combination of SKYN Silicate Paint and TOPLIN Linseed stand oil paint results in a rock-solid assortment for the long-term protection of monumental property. With the knowledge and combined 228 years of experience of Beeck and RIGO Verffabriek, we can offer you excellent advice with regard to the most suitable sustainable paint system for current and future heritage.



FIXATIVE #8800

- Special water glass fixative for the optimisation of mineral substrates
- Can be used to saturate and reinforce porous mineral substrates, including those with a hydrophobic or partially organic character, such as insulating plasters or existing coats that cannot fully be removed



MINERAL SILICATE PAINT #8850

- Extremely durable, active silicate paint based on pure potassium silicate for mineral substrates
- Very low maintenance; for outdoor use
- Results in silicification with the surface, which means the paint won't peel
- Excellent moisture permeability
- Thanks to the use of high-grade pigments, this paint is exceptionally colourfast
- Easy to apply in even coats



MINERAL RENO SILICATE PAINT #8860

- Can be applied to mineral substrates
- Also suitable for organic substrates, such as conventional dispersion wall paints that do not silicify with conventional mineral paints
- Very low maintenance; for outdoor use
- Silicate appearance
- Thanks to the use of high-grade pigments, this paint is exceptionally colourfast
- Easy to apply in even coats



MINERAL SOL SILICATE PAINT #8870

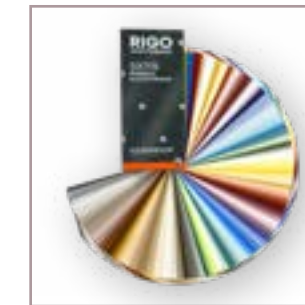
- Breathable and moisture-regulating mineral wall paint for a healthy indoor climate
- Can be applied to mineral substrates
- Mineral matte, with especially deep colours
- Easy to apply in even coats

REINFORCES AND SATURATES THE SUBSTRATE

EXTREMELY DURABLE, COLOURFAST AND BREATHABLE FOR OUTDOOR USE

EXTREMELY DURABLE AND COLOURFAST, EVEN ON ORGANIC OUTDOOR SUBSTRATES

MINERAL MATTE APPEARANCE INDOORS

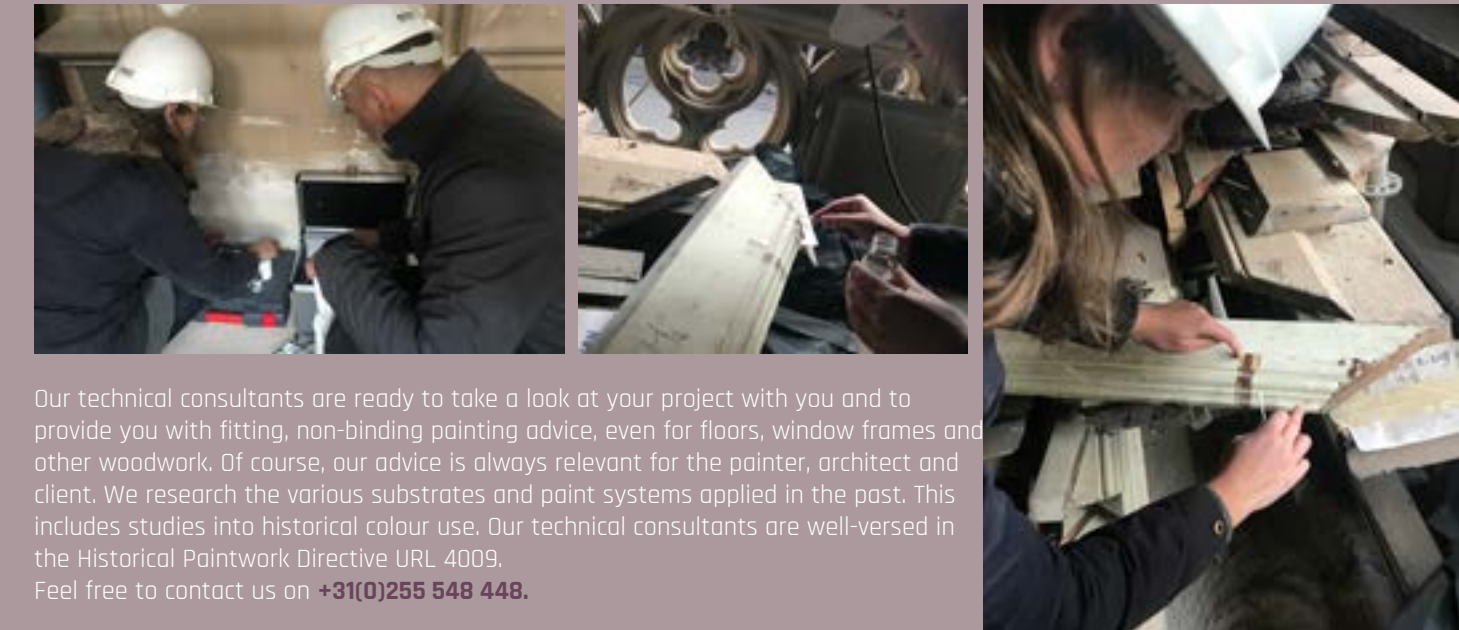


SKYN MINERAL WALL PAINT COLOUR CHART

- Mineral wall paints are characterised by their lovely matte appearance and intense, deep colours
- The SKYN mineral wall paints are manually mixed to the right colour using mineral pigments, which are extremely colourfast
- This means mineral paint will retain its colour for a long time

Call **+31 (0)255 548 448** or send an email to info@rigoverffabriek.nl and ask us for the colour chart!

TECHNICAL ADVICE AND SUPPORT



Our technical consultants are ready to take a look at your project with you and to provide you with fitting, non-binding painting advice, even for floors, window frames and other woodwork. Of course, our advice is always relevant for the painter, architect and client. We research the various substrates and paint systems applied in the past. This includes studies into historical colour use. Our technical consultants are well-versed in the Historical Paintwork Directive URL 4009. Feel free to contact us on **+31(0)255 548 448**.

ADVICE & SUPPORT



IMMEDIATE ADVICE OR SUPPORT You can easily reach us on our **WhatsApp** number **+31 (0)6 47 05 78 24** on working days between 8.00 am and 05.00 pm (CET) for immediate advice or support. If you send us some pictures, our advisors will take a look at them right away and call or message you their recommendations.